



**US DEFENSE**  
SYSTEMS

# M113 REFURBISHMENT PROGRAM

ACQUISITION OF “END OF LIFE” M113’S FOR REFIT AND REENTRY INTO COMBAT SERVICE IN SUPPORT OF THE WAR IN UKRAINE.

Dual air personnel heater

External Fuel Tanks

Variable speed fan

Spall liners

Stronger idler

7C U-Joints

Steering yoke

# PROGRAM OUTLINE

- ACQUIRE
- CONSOLIDATE
- RESTORE + UPGRADE
- VALIDATION + FINAL INSPECTION
- PROJECT MANAGEMENT AND LEGAL COMPLIANCE



# ACQUISITION



EVOLUTION OF THE M-113 SERIES OF VEHICLES. MANY OF THESE DIFFERENT SERIES HULLS REMAIN AVAILABLE FOR RESTORATION.

# ACQUISITION



- Purchase surplus hulls from various depots within the DOD system



- Various unit types IFV, Mortar, Command, Ambulance



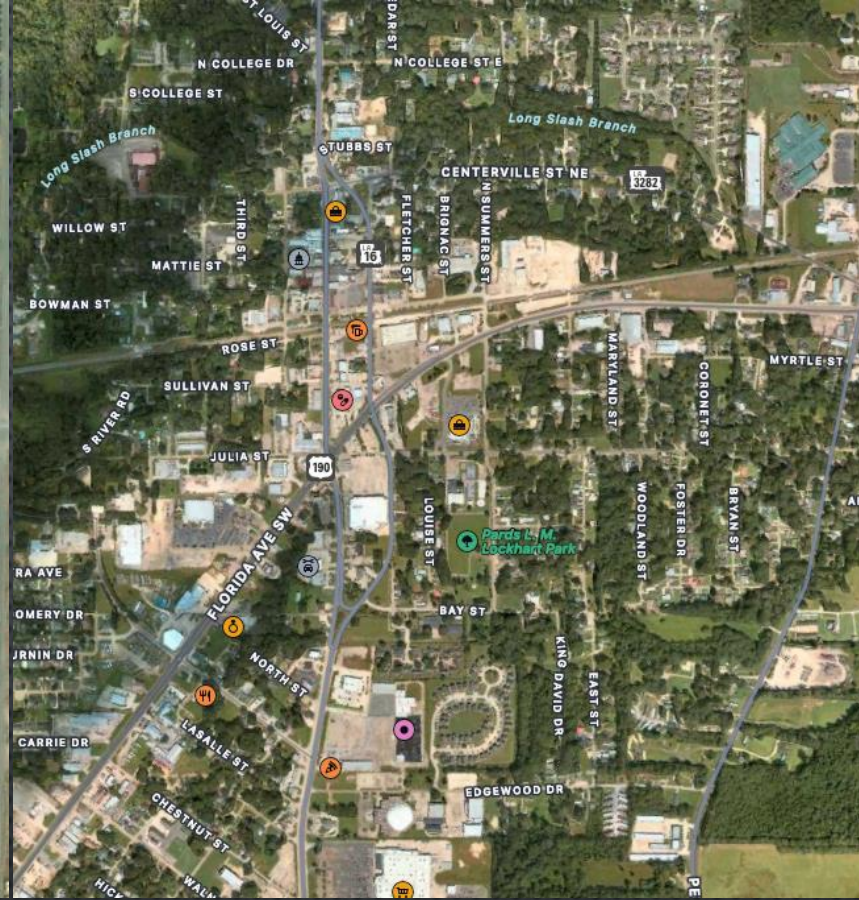
- POWER PACKS ARE ACQUIRED NEW AND OR REBUILT TO NEW SPECIFICATION



- ANY MISSING ARMOR OR HATCHES ARE FABRICATED BY 3<sup>RD</sup> PARTY SUPPLIER OR SOURCED FROM SURPLUS



Sourcing Depot's



LA Heavy mechanical



NC Staging and final prep

# CONSOLIDATION

MULTIPLE UPFIT FACILITY'S ALLOW FOR PROGRAM FLEXIBILITY AND REDUNDANCY IN SERVICE AVAILABILITY.



## RESTORE & UPGRADE

- POWER PACK REPLACEMENTS
- MULTI POINT INSPECTIONS
- OPTIONAL NIGHT DRIVING VISION SYSTEM UPGRADES
- ADDITION OF WEAPON SYSTEMS 12.7 AND OR MK19 AUTO GRENADE LAUNCHERS
- INTERIOR SEATING RECONFIGURATION
- ENSURE OPERATIONAL WHEELS, SPROCKETS, AND TRACKS
- CHECK ANCILARY SYSTEMS SUCH AS LIGHTS AND BILGE PUMPS

# VALIDATION & FINAL INSPECTION



Conduct a 90 point inspection as specified in the US Army M113 user manual.



Prepare unit for RORO sea transportation



Generate required paperwork for shipment

SPROCKET

MOUNTING  
BOLT



# PROJECT MANAGEMENT AND LEGAL COMPLIANCE

CONTACT: [DRS@USDEFENSESYSTEMS.COM](mailto:DRS@USDEFENSESYSTEMS.COM) FOR MORE INFORMATION VISIT OUR WEBSITE: [WWW.USDSTRADE.COM](http://WWW.USDSTRADE.COM)



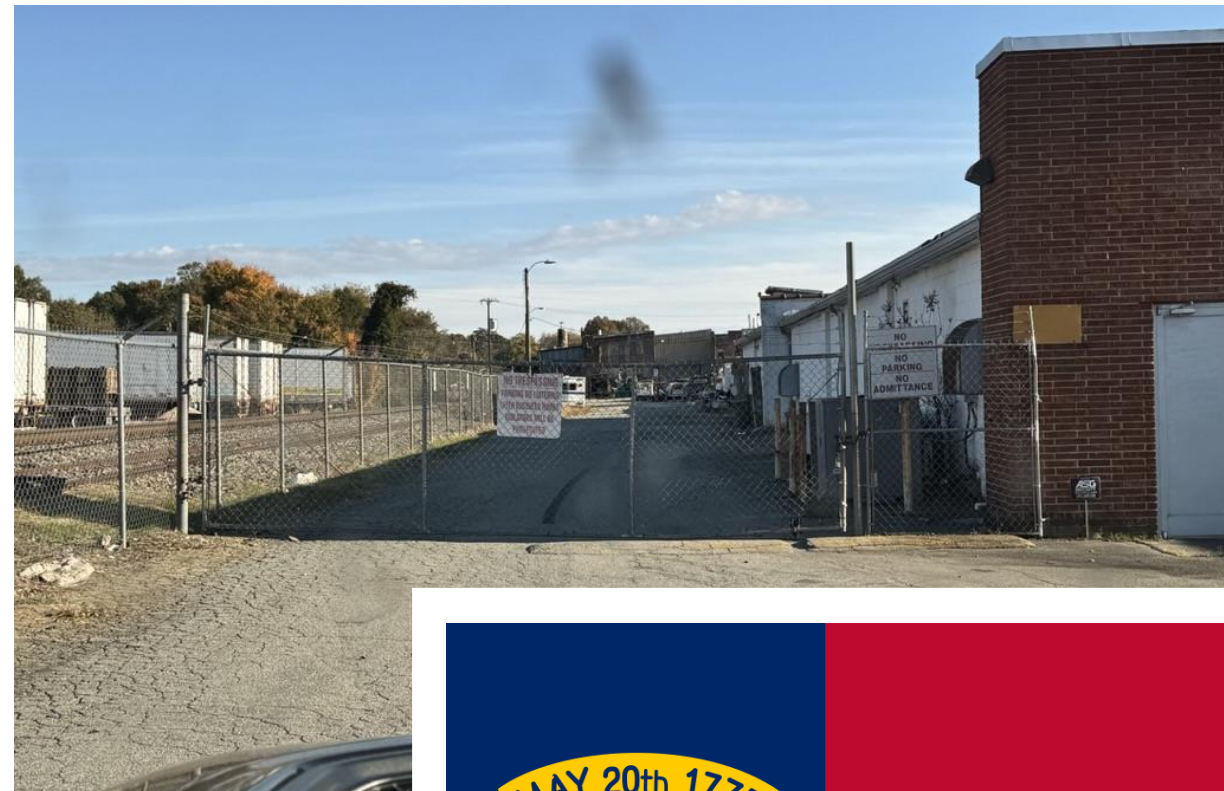
USDS is experienced in project management of commercial and government efforts. Our experience in supply chain, fabrication, manufacturing, and delivery make us uniquely suited for this procurement, refurbishment, and redeployment to the battlespace.

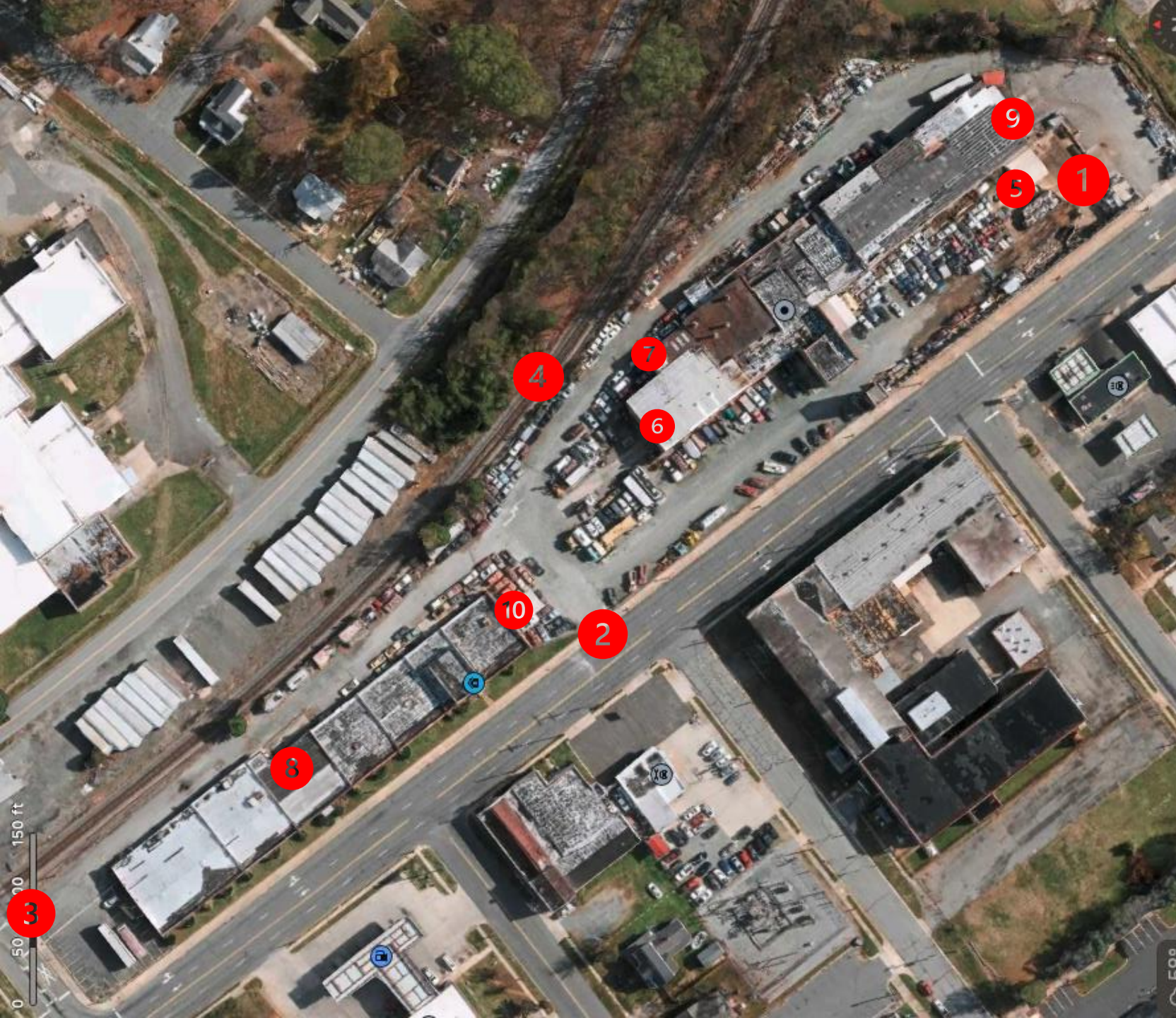


In addition to the technical and logistical aspects of this program M113 Armored personnel carriers in all variations, are considered significant military equipment by the united states department of state as per CFR part 121 USMIL. As such these units require an approved export license (DSP-5) in order to be exported. US DEFENSE SYTEMS is a registered manufacturer and broker of SME goods, and is experienced in the compliance with ITAR related exports.

# NORTH CAROLINA CONSOLIDATION YARD

- CLOSE PROXIMITY TO RAILROAD
- TRANSFER TRUCK AND FLAT BED ON SITE
- EXPERIENCED DIESEL MECHANICS ON STAFF
- ALUMINUM CAPABLE WELDERS ON SITE
- INDOOR AND OUTDOOR BAYS AND WORKSPACES
- SECURE FACILITY, FENCED AND VIDEO CAMERAS
- FLUID RECOVERY SHED, ENVIRONMENTAL COMPLIANCE
- ELECTRIC MOTOR REWINDING AND STARTER REBUILD
- FACILITY HAS ACTIVE FFL TYPE 07 WSOT,08,23 ALSO STATE DEPT. M AND K CODES AT THIS ADDRESS.
- ENERGETICS AND WEAPONS STORAGE
- WATERJET AND FORMED METAL FABRICATION SHOP



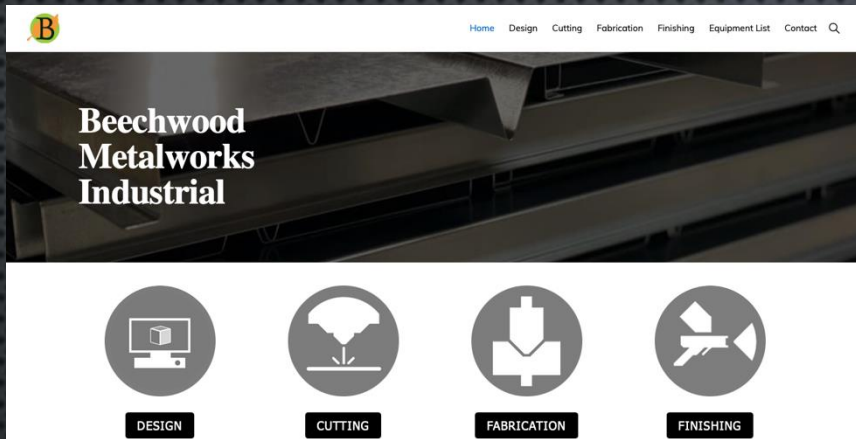


# Webb AVE Facility

1. Gate 1 808 Webb AVE
2. Gate 2 684 Webb AVE
3. Gate 3 Gilmer st.
4. Railroad (ACTIVE)
5. Fluid recovery station
6. Indoor bay 1
7. Indoor bay 2
8. Small machine shop & available offices
9. Loading docks and interior storage
10. Outdoor Bay 1



# LOCAL SUPPORT COMPANIES



- BEECHWOOD METALWORKS INDUSTRIAL,  
1139 WEST WEBB AVE., BURLINGTON, NC  
27217



- Aldermans electrical motor 927  
E Webb Ave, Burlington, NC  
27217



- Chris Fuqua Towing and Rigging  
626 Gibson Rd Mebane, NC  
27302

## Power Up Your Fleet at Diesel Engine & Heavy Equipment

- 1547 N Graham  
Hopedale Rd  
Burlington, North  
Carolina 27217

# SHIPPING ARRANGEMENTS

BURLINGTON TO PORT OF WILMINGTON NC. UNITS SHIP SEA CARRIER ON RORO OR FLAT RACK TO CONSTANTA SEA PORT. RAIL TRANSFER AT CONSTANTA FOR TRIP TO KYIV OR OTHER VIA DORNESTI. ROMANIAN AND UKRAINIAN RAIL GAUGE DIFFERENCES REQUIRE FAST TRANSFER AT DORNESTI RAIL HUB. TRUCK TRANSPORT IS OPTIONAL ALSO. ALL PERMITS AND LOGISTICS IN ROMANIA IS HANDLED DIRECTLY THROUGH OUR PARTNER IN COUNTRY.

